

# Driving Directions to Gainesville, GA (KGVL) CAP Hanger DD-17

**From I-985 :**  
 North Hwy 60 (Queen City)  
 Left on Aviation Blvd.  
 Continue past airport entrance

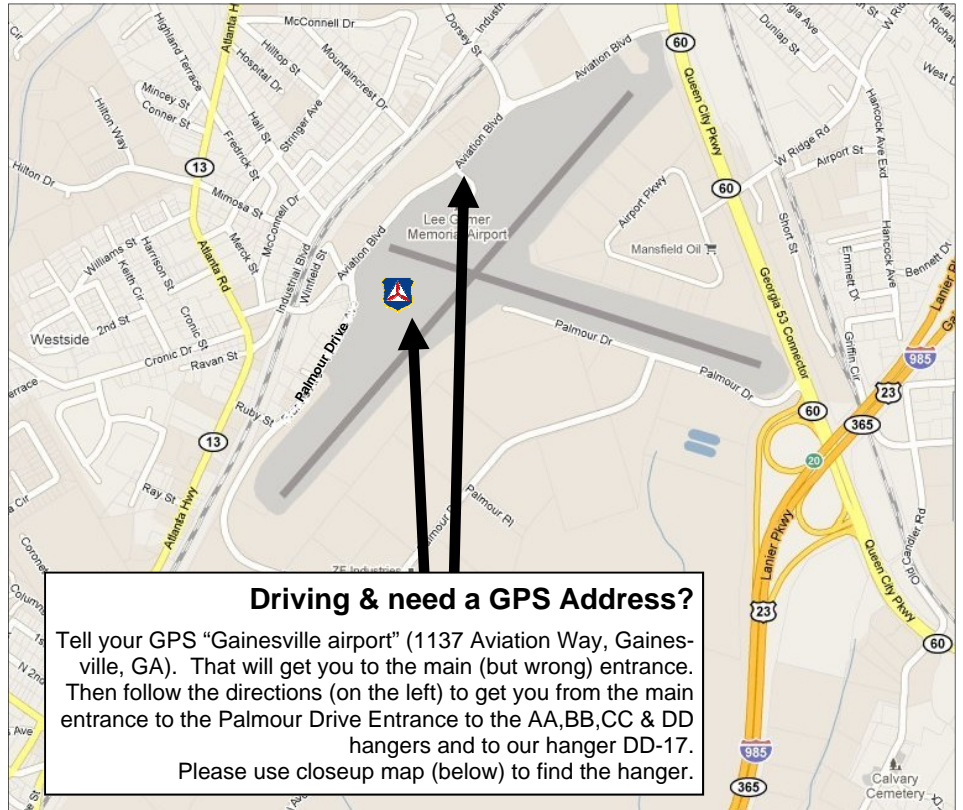
**From Georgia 400:**  
 Take Hwy 53 west to Gainesville.  
 Cross Jesse Jewell Parkway.  
 Right on Aviation Blvd.  
 Continue past airport entrance

**And then:**  
 Left at next traffic light– Palmour Dr  
 Sharp immediate left into security gate.

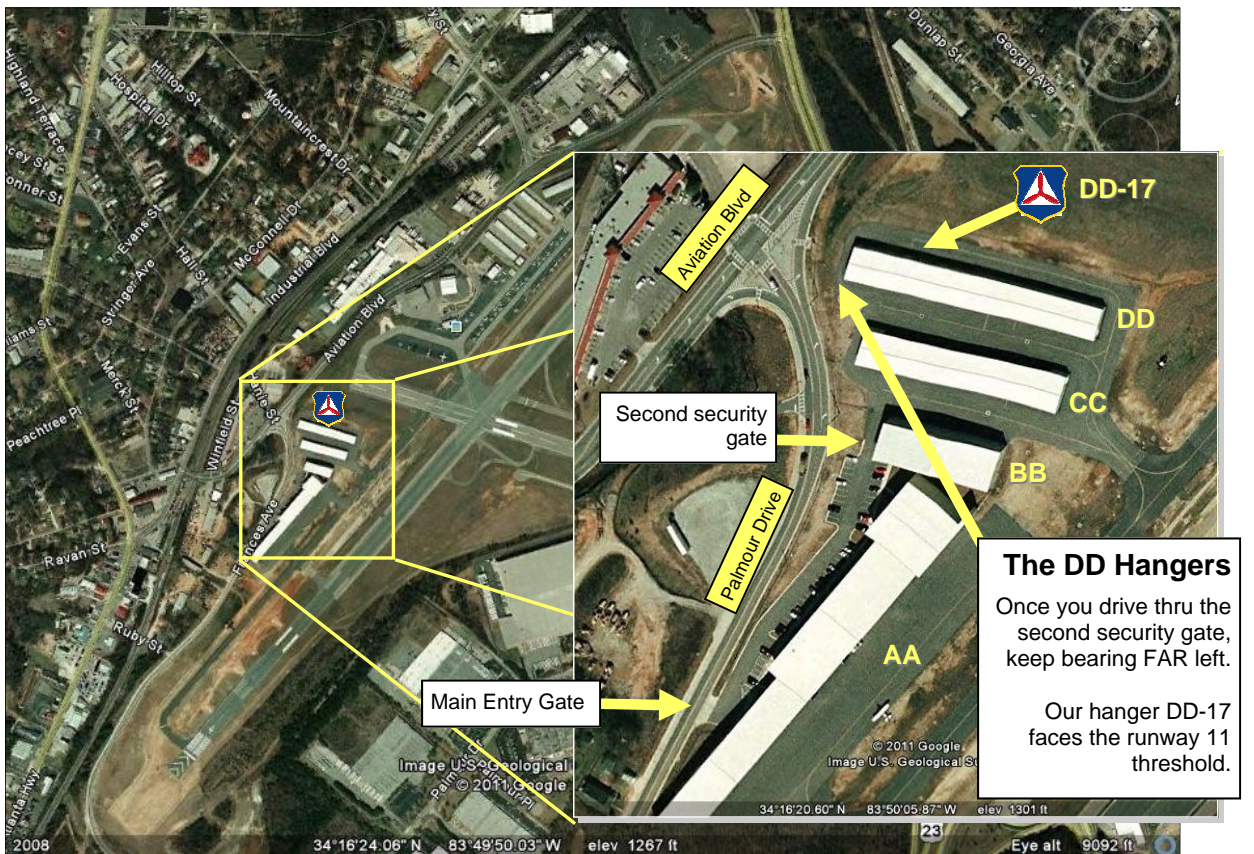
“Lanier Flight Center” is inside the gate  
 in hanger AA-5.  
 Drive past Lanier Flight Center.  
 Drive thru inner security gate.

Keep bearing far left past “BB” and  
 “CC” hangers. The DD hangers are  
 closest to runway 11.

**(See close-up below.)**



**Driving & need a GPS Address?**  
 Tell your GPS “Gainesville airport” (1137 Aviation Way, Gainesville, GA). That will get you to the main (but wrong) entrance. Then follow the directions (on the left) to get you from the main entrance to the Palmour Drive Entrance to the AA, BB, CC & DD hangers and to our hanger DD-17. Please use closeup map (below) to find the hanger.



**The DD Hangers**  
 Once you drive thru the second security gate, keep bearing FAR left.  
 Our hanger DD-17 faces the runway 11 threshold.